

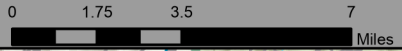


# Information

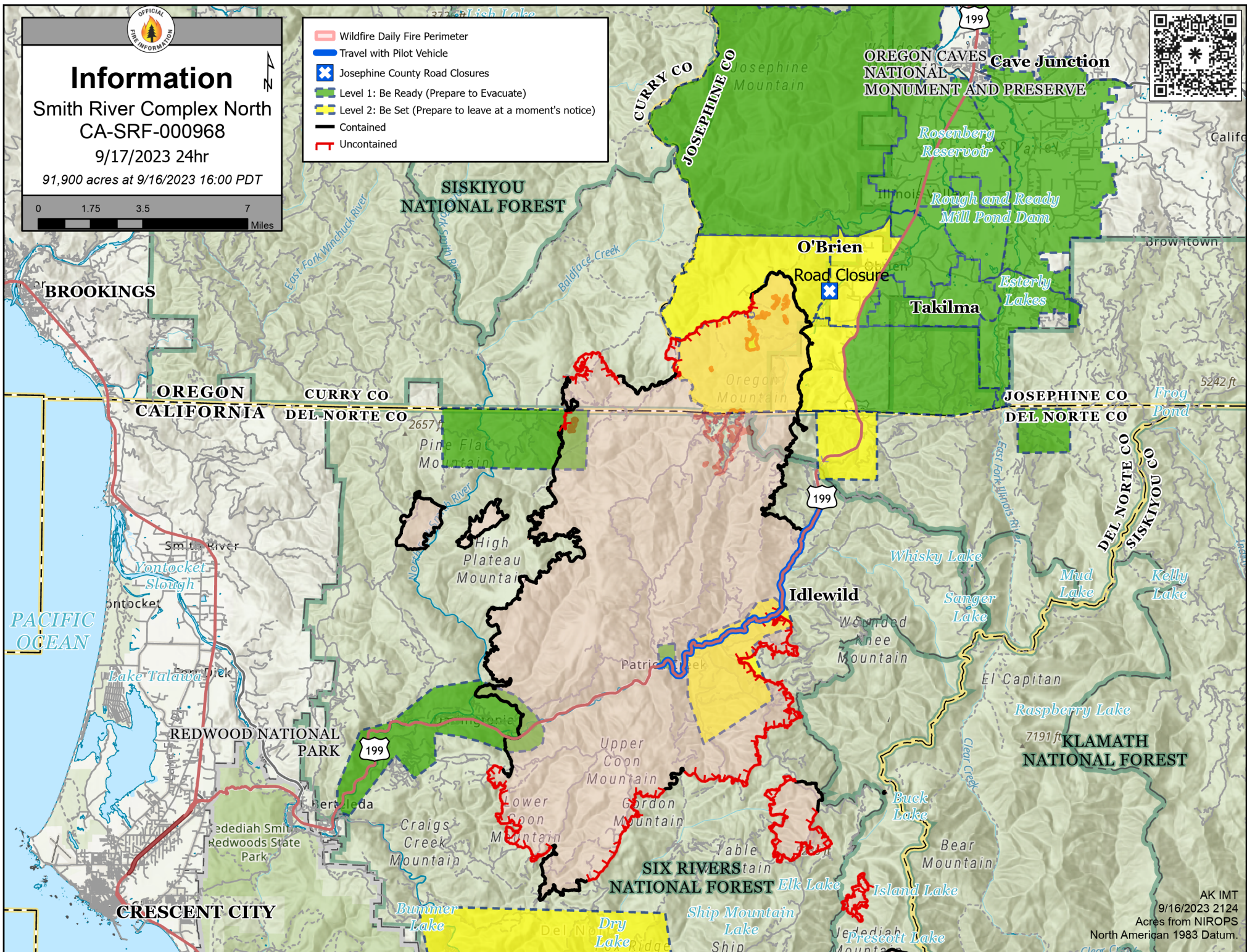
Smith River Complex North  
CA-SRF-000968

9/17/2023 24hr

91,900 acres at 9/16/2023 16:00 PDT



- Wildfire Daily Fire Perimeter
- Travel with Pilot Vehicle
- Josephine County Road Closures
- Level 1: Be Ready (Prepare to Evacuate)
- Level 2: Be Set (Prepare to leave at a moment's notice)
- Contained
- Uncontained



AK IMT  
9/16/2023 2124  
Acres from NIROPS  
North American 1983 Datum.